

The Bramaterra Room



Display of antique wine-making tools: wine-press, grape-crushers, vats, the “brenta” containers used in the grape harvest, and agricultural tools.



Bramaterra Ecological Museum

PIAZZA SANTA CATERINA 7
FRAZ. CASA DEL BOSCO
13868 SOSTEGNO (BI)



<http://www.atl.biella.it/rete>

**OPENING TIMES: every Sunday until
9 th October, with free guided tours
from 10 a.m. to 1 p.m. and 2 to 6 p.m.**

The Museum promotes the “Bramaterra” area by keeping historical documentation about:

- the local wine-growing traditions of the seven Bramaterra wine-producing villages: Roasio, Lozzolo, Sostegno, Villa del Bosco, Masserano, Curino and Brusnengo.
- hydrogeological and environmental research by IRPI (the Italian Hydrogeological Protection Research Council) relating to the Valle della Gallina catchment basin (located in the municipalities of Sostegno and Lozzolo).



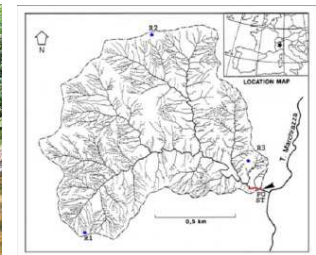
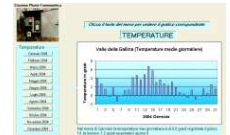
#ReteMuseBi #InnamoratiDelBiellese

The Research Room



© foto IRPI-Torino

Display of scientific research materials and samples for natural history observations in the unique Bramaterra area.



<http://www.irpi.to.cnr.it/documenti/Gallina.pdf>